

Haw Creek

Community Association Newsletter



East Asheville Youth Sports

www.eayouthsports.com

Baseball Sign-Ups

East Asheville Little league is looking forward to another fun and exciting season. Sign-ups will be Sat, Feb 9th & 16th from 9:00am - 3:00pm at the East Asheville Community Center. Come sign-up, enjoy free Frank's Pizza, a chance to win a 2008 Chevy Tahoe compliments of Black Mountain Chevrolet, and the 150 players to register will receive a free t-shirt. Registration fees are \$50 per child.

The community is invited to help out with a work day at the ball field February 23rd at 10:00am. Everyone is welcome to come out and help get the fields ready for the season!

There was a booster meeting held on 12/2/2007 at which time a new board was elected. The new board is as follows (see website for complete list):

President - David Johnson
Vice President - Leah Trexler
Treasurer - Tim Rhodes
Secretary - Tracy Setzer

The next booster meeting is Sun, Feb 3rd at 2:00pm at the EACC.

Quarterly Meeting Thurs, Jan 24th, 7:00pm

Location: St. John's Church
Agenda: Elections
Program: Maple Dr Park

Please join us for your association's annual meeting at 7pm on Thursday, January 24th in St. John's Episcopal Church, 290 Old Haw Creek Road. On the agenda will be program reports, election of association board positions and officers, as well as a special guest who has served Haw Creek well. Please join us if you are able.

A New Park in Haw Creek?

Chris Pelly

For the past several months the Haw Creek Community Association has been working to preserve a nine acre wooded site off Maple Drive. This property is significant because preserving it would, for the first time, provide a public walking trail connection between Haw Creek valley and the Blue Ridge Parkway as well as the adjoining Mountains-to-the-Sea Trail. Because this property borders the Parkway and is covered by a canopy of hardwood trees, it will be an ideal setting for a public park and walking trail.

Like so many areas of Asheville and Buncombe, Haw Creek is feeling development pressures. Our valley is averaging about one new subdivision per year. Because of this, one goal of the community association has been to work to preserve open spaces when opportunities for preservation become available.

Presently this property is listed for sale and subject to being sold at any time. So the challenge with the Maple Drive property is assembling a funding package to raise most or all of the \$750,000

asking price—before it becomes our next subdivision. To meet this challenge our community association has pledged to raise \$250,000. We have also asked the City of Asheville to contribute another \$250,000. And the other third we will seek from the Buncombe County Commissioners.

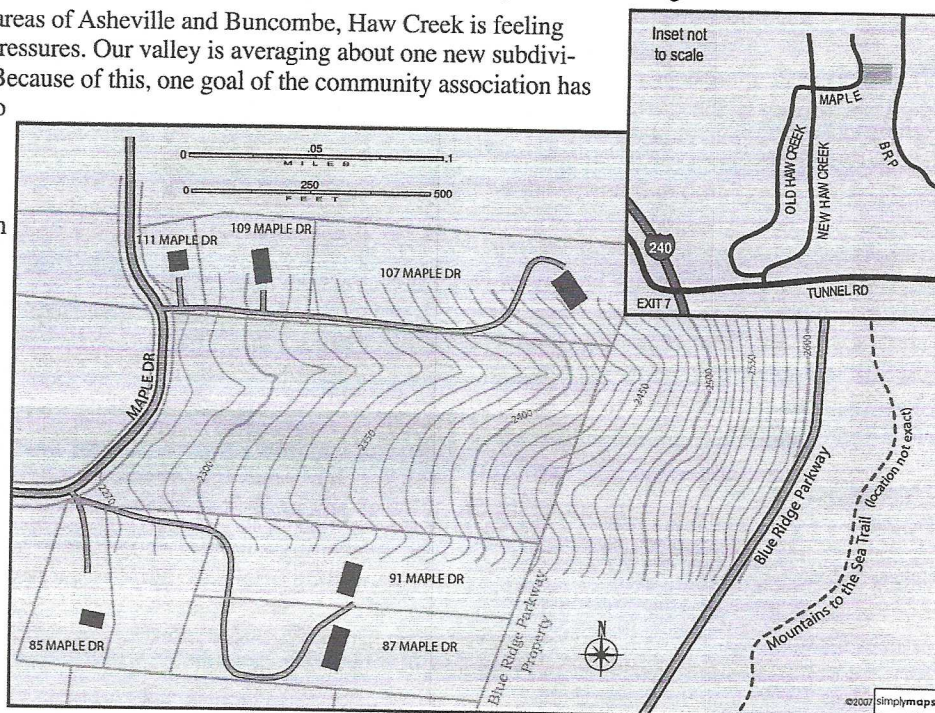
We are pleased to announce Asheville City Council, with leadership from Mayor Bellamy, voted on November 27th to contribute one third of the purchase price up to \$250,000. And our community association has to date raised \$125,000 towards its pledge of \$250,000. This from two generous Haw Creek donors who have each pledged \$25,000 as well as from a \$75,000 state grant.

On January 22nd we will present to the Buncombe County Commissioners to request they help us complete this fund-raising goal. Their support will be vital to assembling the needed funding package. This is where we need your help. We need Haw Creek residents to attend the Commissioners meeting to show your support for buying this property. By doing so, you will help us preserve this land as a park for future generations. And, if you are unable to join us, you can contact our elected commissioners to lend your support. Their contact information is on the following page.

What: Haw Creek Presents to Buncombe Commissioners

When: Tuesday, January 22nd at 4:00pm

Where: Buncombe County Courthouse, Commissioners Chamber on 2nd Floor, Room #204, (enter courthouse on College St side of building)



East Asheville Pool
www.eastashevillepool.com

Is now excepting applications for lifeguards and the concession stand. To request an application for a lifeguard position contact Melody Harris at mharris67@gmail.com To work in the concession stand contact Tonya Roberts at showrob@charter.net

For pool membership information, swim lessons and swim team see the pool's web page, www.eastashevillepool.com. Membership applications will be taken starting March 1 on a first come first serve basis. Membership fees are \$400.00 for non-stock members.

We Love A Parade!

Plans are already in the works for the Second Annual HCCA Memorial Day Children's Bike Parade. If you would like to assist with planning, donate prizes or refreshments or have a special skill that could make this an even BETTER event we would love to hear from you, contact Beth Jezek 299-0914. Mark your calendars now and we'll see you then!!

Postponed

Due to a very limited response to the suggestion our association lead a Christmas caroling effort, we decided to pass on this project for this year. We look forward to possibly doing this next year.

Haw Creek Community Association

Board of Directors

President	Chris Pelly	95 Cisco Road	298-5299	cpelly@buncombe.main.nc.us
Vice President	TO BE FILLED			
Secretary	Todd Tamplin	505 Old Haw Creek Road	296-8380	tjtamplin@charter.net
Treasurer	Vickie Gaddy	440 Governors View Road	275-2680	vjones@charter.net
Newsletter	Amy McCrea	433 Governors View Road	299-1831	amymccrea@charter.net
-	Ed Seel	107 Maple Drive	298-5413	edandpat@bellsouth.net
-	Beth Jezek	62 Cisco Road	299-0914	bjezek@juno.com
-	TO BE FILLED			

MEMBERSHIP: Membership in the Association shall be available to residents, as well as property owners, in the Haw Creek community and there shall be one class of membership.

DUES: Twelve dollars (\$12) paid once annually in January. Make your check to HCCA and mail to: HCCA; P.O. Box 9193; Asheville, NC 28815

Please include: member names, postal address, phone number, and e-mail address.

Visit our new website at www.hawcreeknc.org.

County Commissioners Contact Information

Nathan Ramsey, Chairman
nathan.ramsey@buncombecounty.org
768-3216

Bill Stanley,
bill.stanley@buncombecounty.org
250-4007

Carol Peterson,
carol.peterson@buncombecounty.org
250-4005

David Young,
davidy@fugazync.com
274-2555

David Gantt,
commissioner@davidgantt.com
252-2852

President's Message

Dear Neighbors,
Your community association is hard at work trying to preserve land for another park for Haw Creek. Those of you who lived here in the late 1990's may recall our efforts then led to Haw Creek Park on Avon Road. Back then, many of you pitched in and helped put the 'community' in this community park. We need your help again to be successful in preserving the Maple Drive property. First step is joining us for the January 22nd Buncombe Commissioners meeting.

And two days later on January 24th is our association's annual meeting at St. John's Church at 290 Old Haw Creek Road. Please join us for both events.

Thank you,
Chris Pelly, President HCCA

Keeping It Clean

HCCA will be sponsoring a neighborhood litter cleanup on March 29th, weather permitting of course. Meet at the baseball field at 9:00am. Please dress to work bring gloves, boots and your enthusiasm to keep it green. For more information contact Bob Pierce at 404-406-5755.

Bethesda United Methodist Church

Is hosting its first Miraculous Monday Meals for single parents and community seniors on Monday, January 28 from 5pm to 6pm in the church fellowship hall. The cost is free (donations from those who are able are welcome) but reservations are required. If you would like to attend, please call Sara Scruggs at 298-7970. Be sure to leave your name, your phone number, and the number who of people would like to attend. Someone will call back to confirm your reservation.

Meals will continue to be held on the last Monday of each month.

If you would like to volunteer to transport food, welcome people, donate paper goods, etc., please call Rev. Sara, or e-mail at chapelparsonage@bellsouth.net

2008 Meeting Schedule

Thurs, Jan 24th, 7:00pm
Location: St. John's Church
Agenda: Elections.
Program: Maple Dr Park Plan

Thurs, April 24th, 7:00pm
Location: St. John's Church
Agenda:
Program: TBA

Thurs, July 24th, 7:00pm
Location: St. John's Church
Agenda:
Program: TBA

Thurs, Oct 23th, 7:00pm
Location: St. John's Church
Agenda:
Program: TBA

*Any or all of the above are subject to change at any time. Please check calendar with each issue for any changes or check the website.

Newsletter layout by:
Amy McCrea

Printed by:
Biltmore Press Inc.
Printed on an IGEN Digital Press

SCHOOL NEWS

Haw Creek

Elementary School

www.hces.buncombe.k12.nc.us/

- Jan 15 PTA Board Meeting @ 6:00, Media Center
- Jan 17 AIG Parent Information Night, @6:30, Little Theater
- Jan 24 Jim Weiss, storyteller, performance for families, @7:00pm
- Feb 6 Haw Creek Urban Burrito Night (eat at Urban Burrito and we get a percentage of the sales)
- Feb 8 School Coupon Checkbook Sales Begins
- Feb 12 Volunteer Appreciation Celebration, 7:00-8:00
- Feb 15 PTA Movie Night
- March 11 Haw Creek Variety Show and Carrabbas Night

Charles C. Bell

Elementary School

www.ccbes.buncombe.k12.nc.us/

- Jan 16 Wonderful Wednesday
- Jan 17 Fund raiser ChuckyEcheese
- Feb 5 6pm Skate Night at TarWheels
- Feb 13 Wonderful Wednesday
- Feb 13-15 Jump rope for heart
- Feb 21 Fund raiser Jersey Mikes
- Feb 28 7pm public performance of Dancing through the Decades
- Feb 29 DTD at Pisgah Elem School
- March 19 Wonderful Wednesday
- March 20 Fund raiser ChuckyEcheese
- March 21-28 Spring Break

Evergreen Community Charter School

www.evergreencs.org/

-Evergreen is a finalist in Ellen DeGeneres' "Greenest Grade School in America"! All finalists will receive \$5,000 and the grand prize winner (who will be announced on the Ellen Show) school will win \$50,000, solar powered I Pods for the students and a year's supply of All Small and Mighty Laundry Detergent.
www.gogreenwithall.com./finalists/?sid=3

-Information meetings for prospective parents on:
Both sessions are from 5-7pm
-Jan 23 is for grades K - 1
-Jan 24 is for grades 2 - 8.

Haw Creek Native: Interview with Bob Jolly

By Chris Pelly

Bob Jolly has lived in Haw Creek since 1945, the year his family moved here when he was just a toddler. A long-time successful business leader, Bob and his wife Mildred live in a Sondley Parkway home adorned with brick pillars topped by two large cement balls which once graced the entrance way to the old Haw Creek School. Bob's attachment to Haw Creek prompted him to preserve the spheres, each weighing 1,300 lbs, when the old Haw Creek School was torn down to make way for Beaucatcher Theatres.

Where were you raised?

I was raised in the 'Jolly House' located at the corner of New Haw Creek and Beverly Roads opposite the old Millers Store. The Miller family would kindly use their horses to plow our farm field which ran beside Haw Creek. After they plowed we kids would find arrowheads in the soil.



Bob Jolly and his sisters, Judy, Joyce & Jan, standing opposite Millers Store at the corner of Beverly Rd and New Haw Creek Rd around 1950.

unlocked at night. Haw Creek School was the center of the community and had fine teachers like Mrs. Angel and Mrs. Whitson. But we must not have been too rich because when I played on the basketball team I wore the exact same #22 jersey my dad wore a generation before me.

Why is Haw Creek important to you?

I treasure a lifetime of relationships. Just like the vein of blue clay soil that the Indians used for pottery that runs through the ground here in the Sondley area, I am of this place. There is no other place I'd rather live.

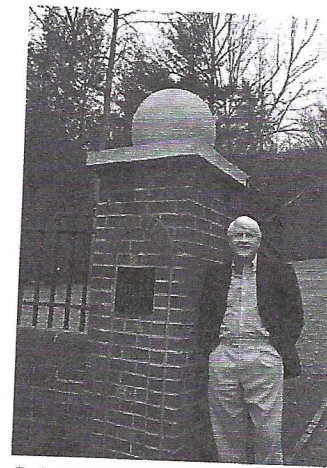
Also, if you or someone you know, has a Haw Creek history story to tell and would like to be profiled in a future interview, please contact Chris Pelly (298-5299).

Meet the New HCCA Board Nominees

The HCCA board will hold elections at the January meeting for two board openings. We are excited that two people have stepped up to be nominees. We welcome these fresh new faces and welcome any others that would like to volunteer to be in the running.

Jennipher Spector- I have lived in Haw Creek for two years with my husband and two children. I am currently a website programmer, and my hobbies include gardening, canoeing, hiking, and volunteering at my children's schools (Evergreen and Artspace). I am especially interested in expanding our parks and trails systems in Haw Creek, helping to make our community more pedestrian and bicycle-friendly.

Bob Pierce- I have lived in Haw Creek for about a year. My and wife and I moved from Georgia. While in Georgia we both worked as Geologists for the State, I worked in the environmental protection field. I want to help make any changes in the Haw Creek Valley environmentally friendly. My hobbies are hiking and other nature related activities.



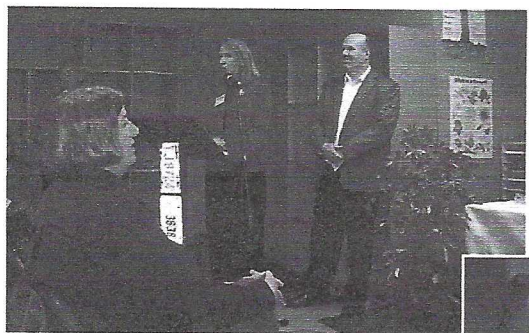
Bob Jolly outside his home, that displays the large spheres originally at Haw Creek School.

REMINDER: It's Dues Time!

HCCA dues are due ONCE annually. We welcome payment at our January meeting on Jan. 24th at 7:00pm.

Highlights From the City Council Forum

The City Council Candidates Forum was a huge success! The turnout was exceptional and coverage by the media was full force. We all owe many thanks to the students, staff and families of Evergreen for being wonderful hosts. This was an awesome learning experience for the students. Students were a huge help with handing out questions cards, greeting neighbors, time keeping and as well as Rachel Grabenstein and Eowyn Lucas were excellent at reading the candidates questions from the audience.



Evergreen Director, Susan Gottfried, greets the candidates and community. Chris Pelly, HCCA President, gives the candidates an overview of Haw Creek.



Evergreen Student Ambassadors, Rachel Grabenstein (top) and Eowyn Lucas (left), read questions to the candidates.



All the City Council candidates attended and had a good time answering the wide range of community questions.

Evergreen family Elaine Sargent and her kids Jazlyn and Tazlyn.